

DIFFERENT POSSIBILITIES OF ARRANGEMENTS OF PRIVATE GREEN SPACES

Vlad Ioan, Vlad Mariana, Vlad Ioana *

*University of Oradea, Faculty for Environmental Protection, 26 General Magheru St.,
4100848, Oradea, Romania: ioanvlad2006@yahoo.com

Abstract

In this paper two locations in Oradea town, A and B, have been studied for planning and establishing of two green gardens and by this the decorative effect is realized and makes possible enjoying time in the middle of the nature.

Key words: green gardens, planning, decorative effect, conifers.

INTRODUCTION

In our days many people become owners and have build constructions on them. The landscaping of the green gardens associated with these buildings must be treated very carefully.

This paper presents 2 landscape projects of two private green gardens.

MATERIAL AND METHOD

Two locations in Oradea town, A and B, have been studied for planning and establishing of two green gardens. The land is private owner, the A location has a 74,5 m² green garden which is surrounded by the family house, and B location is 83,64 m².

The planning and the landscaping of these gardens was made in autumn of 2011. The planting material comes on from Leș nursery, the advantage of this material is the adaptation on local climate conditions.

DISCUSSIONS

In figure 1 is presented the plan with the localization of every used species, from location A. There have been used, in planning and landscaping, different species of conifers (see the key) which decorates by fastigiat garb (*Viburnum carlesii*, *Cornus alba* Spaethii), and by the golden color of the leaves (*Mahonia aquifolia*), or by the short size and globular garb (*Hidrangea macrophylla*). These conifers were placed in small groups, forced by the small surface of the lawn, from the shortest ones (*Cotoneaster praecox*)

near by the allee to the middle sized ones near walls of the building (*Polygonum affine*).

The effect of the single color combination, as a result of using only species with leaves, is completed by the effect of the color spots brought by using roses and annual flowers and *Aperula odorata*. *Avena sempervirens*, with short size and globular grab is in tone with the architecture of the building [1].

The garden is surrounded by a wall in which are placed ornamental flowers pots. Here are planted woody species adapted an this type of living: short size, slow growing, and achieve a permanent decor (see the key). The grass is used to confer a bigger space impression of this small surface.

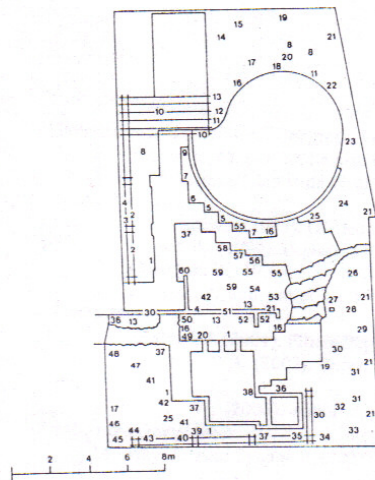
In figure 2 is presented the plan and the placement of the vegetative species from location B.

The rectangular shape of the garden and visual access from the large windows of the house, imposed the garden landscaping as follow: for braking the rigidity of the geometrical shape have been planted sinuous lines from *Budlea davidii*, *Lonicera japonica* Reticulata, *Cotinus coggigia*, *Taxus baccata* fastigiata, connected by a rose kerb from *Rosa Sparrieshoop* and Schneewittchen, and by sinuous lines nearby the secondary wall, from *Jasminum nudiflorum*, *Yucca filamentosa* and *Hosta albomarginata*.

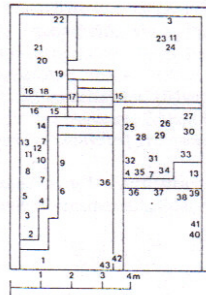
The existence of an area with stones, with a fountain, forced the integration of this area in the landscape by surrounding it with stones with irregular shape from granit and with perenal flowers.

In this way has been created a large view on the middle of the garden and a compact plantation which isolates the house from the noise of the street and visually protect from the indiscrete neighbours.

The decorative effect is realized and makes possible enjoying time in the middle of the nature.



- 1 *Buxus sempervirens* 'Suffruticosa'
- 2 *Euphorbia polychroma*
- 3 *Hydrangea petiolaris*
- 4 *Rosa* 'Blaze'
- 5 *Polygonum affine*
- 6 *Viburnum carlesii*
- 7 *Iris sibirica*
- 8 *Elaeagnus* \times *ebbingei*
- 9 *Alchemilla mollis*
- 10 *Vitis coignetiae*
- 11 *Stachys lanata* 'Silver Carpet'
- 12 *Sinarundinaria murielae*
- 13 *Anemone japonica*
- 14 *Rhus typhina*
- 15 *Rosa nitida*
- 16 *Pulmonaria saccharata*
- 17 *Hydrangea macrophylla*
- 18 *Hypericum calycinum*
- 19 *Cotoneaster* \times *watereri*
- 20 *Hosta sieboldiana*
- 21 *Hedera helix*
- 22 *Mahonia aquifolia*
- 23 *Magnolia* \times *soulangiana*
- 24 *Aralia elata*
- 25 *Hypericum* 'Hidcote'
- 26 *Viburnum* \times *burkwoodii*
- 27 *Epimedium pinnatum*
- 28 *Cornus alba* 'Spaethii'
- 29 *Sorbus aucuparia*
- 30 *Lamium maculatum*
- 31 *Mahonia bealii*
- 32 Birnenbaum
- 33 *Aucuba jap.* 'Variegata'
- 34 *Cotoneaster dielsianus*
- 35 *Linicera* \times *tellmanniana*
- 36 *Fatsia* \times *japonica* (K)
- 37 *Ligularia przewalskii*
- 38 *Nymphaea*
- 39 *Rosa* 'Solo'
- 40 *Cytisus scoparius*
- 41 *Geranium platypetalum*
- 42 *Iris sibirica*
- 43 *Ceanothus* 'Gloire de Versailles'
- 44 *Rosa spinosissima*
- 45 *Macleaya cordata*
- 46 *Cobaea scandens*
- 47 *Helleborus niger*
- 48 *Bergenia* 'Silberlicht'
- 49 *Forsythia* \times *intermedia*
- 50 *Jasminum nudiflorum*
- 51 *Clematis montana*
- 52 *Mahonia japonica*
- 53 *Hypericum patulum*
- 54 *Fuchsia magellanica*
- 55 *Avena sempervirens*
- 56 *Asperula odorata*
- 57 *Cotoneaster praecox*
- 58 *Geranium sanguineum*
- 59 *Hosta crispula*
- 60 *Euphorbia myrsinites*



- 1 *Fatsia japonica* (K)
- 2 *Anemone japonica*
- 3 *Salix alba* 'Tristis'
- 4 *Buxus sempervirens*
- 5 *Lilium regale*
- 6 *Avena sempervirens*
- 7 *Stachys lanata*
- 8 *Papaver orientale*
- 9 *Syrinchium striatum*
- 10 *Bergenia cordifolia*
- 11 *Yucca filamentosa*
- 12 *Rosmarinus officinalis*
- 13 *Hedera*
- 14 *Pelargonium*
- 15 *Euphorbia wulfenii*
- 16 *Chaconomeles japonica*
- 17 *Yucca gloriosa* 'Variegata' und *Chlorophytum* (K)
- 18 *Cotinus coggygria*
- 19 *Buddleia davidii*
- 20 *Cercidiphyllum japonicum*
- 21 *Heracleum mantegazzianum*
- 22 *Parthenocissus tricuspidata*

- 23 Kräuter
- 24 Zierkohl
- 25 *Salvia officinalis*
- 26 *Hedera helix*
- 27 *Prunus subhirtella* 'Autumnalis'
- 28 *Cynara scolymus*
- 29 *Kolkwitzia amabilis*
- 30 *Taxus baccata* 'Fastigiata'
- 31 *Agapanthus campanulatus* (K)
- 32 *Pelargonium*
- 33 *Rheum palmatum*
- 34 *Hosta sieboldiana*
- 35 *Ligularia clivorum*
- 36 *Alchemilla mollis*
- 37 *Helleborus niger*
- 38 *Hosta albomarginata*
- 39 *Geranium platypetalum*
- 40 *Polygonatum*
- 41 *Jasminum nudiflorum*
- 42 *Avocado* (K)
- 43 *Lonicera tellmanniana*

REFERENCES

1. Andekerk, Th. G. L. (1990). Salt tolerance of ten woody ornamentales. Abstr. Of the ~~XXIII~~th International Horticulture Congress, Firenze.
2. Alborede, M.(1992). La mise en bac d'un arbre adulte. Revue Horticole, avril.
3. Boutherin, D. and Bron G. (1999). Multiplication des plantes horticols, Ed. Tehnique et Documentation Lavoisier, Paris.
4. Bush-Brown. (1995). Garden Book, Charrles Scribners's Sons, USA.
5. Contet, A. (1999). Pepiniere d'ornament et fruitiere, Ed. Bailliere et Filis, Paris.
6. Cuisance, P.(1992). Les arbustes d'ornament, Ed. Floraisse Larouse, Paris.
7. Enescu, V. and Ioniță L. (1994). Paladă Nicolau M.- Înmulțirea vegetativă a arborilor forestieri, Ed. Ceres, București.
8. Foucard, J. (2004). Filiere Pepiniere, TEC-DOC Lavoisier, Paris.
9. Gorastarzu, B. (2002). Bacetrisation des substrates et mycorhization centrale, L'horticulture Francaise, mars.
10. Harris, W. (2006). Arboriculture syllabus. Department of Enviromental Horticulture, University of California Davis, USA.
11. Hay, R. and Synage P. (2007). 2000 fleures, plantes et arbustes, Ed Oyez, Leuven, Belgique.
12. Herwing, R. (2008). L'enciclopedie pratique des fleurs, plantes et arbres de jardin, Ed. Culture, Art, Loisir, Paris.
13. Hessayeon, D. (2003). The Tree and Shrub Expert, Publication Britanica House, Great Britain.
14. Jhenesen, H. (2004). Le grand livre international des arbres, Ed. F. Nathan, Paris.
15. Krussman, G, (1998). Die Laubgeholze. Verlag Paul Parey, Berlin.
16. Krussman, G, (2005). Die Laubgeholze. Verlag Paul Parey, Berlin.
17. Mailliet, L. (2003). Arboriculture urbaine, Institute Pour le developement forestier, Paris.
18. Negruțiu, F. (1980). Arhitectura peisajelor, Universitatea din Brașov.
19. Parascan, D. (1977). Fiziologia plantelor, Editura Didactică și Pedagogică, București.
20. Rehder, A. (1985). Manuel of cultivated Trees and Shrubs. Second edition, New York, The MacMillian Company.
21. Stănescu, V. (1977). Dendrologia, Universitatea din Brașov.
22. Vlad, I. (2001). Arboricultură ornamentală, Editura Imprimeriei de Vest, Oradea.